



www.sunxclusive.com



THE SUN XCLUSIVE HOTEL The hip designed hotel in South Pattaya



The Sun Xclusive, the hip designed hotel is located at the corner between the Pattaya Second Road and Thap Praya Road in South Pattaya. With its prime location, it is very convenient for guests to go anywhere in South Pattaya especially Walking Street which is within walking distance from the hotel. There are 3 room types to choose from, The Sun Superior with 26 square metres, The Sun Deluxe with 28 square metres and The Sun Executive with 35 square metres. All rooms have balconies and are fully equipped

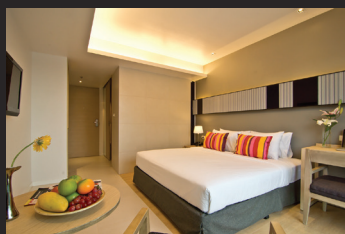
The Sun Xclusive also highlights rooftop swimming pool with pool bar and open lounge area.



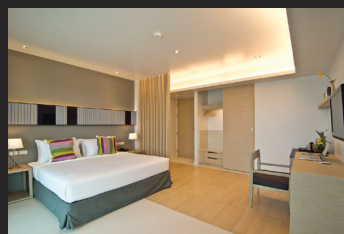
ACCOMMODATIONS



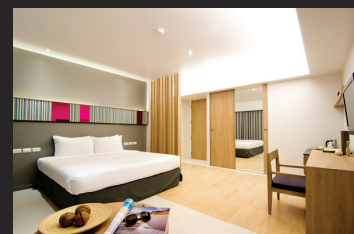
SUN SUPERIOR ROOM



SUN DELUXE ROOM



SUN EXECUTIVE ROOM



SUN FAMILY 2 BEDROOMS

All rooms have balconies and are fully equipped with electronic key cards, LCD TVs with cable programs, in room electronic safes, hair dryers, coffee and tea facilities, Rest rooms with hot and cold water and shower closets, free wifi internet connection.



THE SUN XCLUSIVE HOTEL

Address : 358/27 M.10 Thap Phraya Rd. T.Nongprue A.Banglamung, South Pattaya, Chonburi 20150

GPS >> Latitude : 12.922014
Longitude : 100.871837

Tel : 038 250 234 | **Fax :** 038 250 232

Email : rsvn@sunxclusive.com

www.sunxclusive.com

MAP & LOCATION

